

Double Dawgs

Undergraduate / Accelerated Master's

Undergrad + Grad = 5 Years or Less

BACHELOR OF SCIENCE OR ARTS + MASTER OF PUBLIC HEALTH



UNIVERSITY OF
GEORGIA
College of Public Health



BECOME A DOUBLE DAWG

The Double Dawgs program at the University of Georgia was created to give ambitious and motivated students a competitive advantage in today's knowledge economy. By earning both a bachelor's degree and a master's degree in five years or less, students can save time and money while positioning themselves for success after graduation.

At the College of Public Health, students have the unique opportunity to pair their Bachelor of Science (BS) or Bachelor of Art (AB) degree with a Master of Public Health (MPH).



There are multiple incentives for applying for the Double Dawg pathway. The program allows you to earn two degrees in less time than it would take to do so separately, saving you time and money. It's also just a great way to meld the undergraduate and graduate learning experience together, allowing you to explore topics in a deeper way.

KYLE PATEL, B.S. BIOLOGY/MPH '21
(ALSO A.B. INTERNATIONAL AFFAIRS '20)

THE UGA ADVANTAGE:

- **A Head Start**
Begin graduate coursework while you're completing your major requirements.
- **Shared Credits**
12 hours of graduate coursework count towards undergraduate coursework.
- **Accelerated Timeline**
With careful planning you finish the MPH in one year, instead of two.

DoubleDawgs
Undergraduate / Accelerated Master's

THE MPH DEGREE

The Master of Public Health (MPH) degree was developed to address the critical need for highly trained public health professionals. Through coursework and field learning experiences, MPH students receive training to provide service and leadership in public health. Students can choose from any of the following concentrations:

- Biostatistics
- Disaster Management
- Environmental Health
- Epidemiology
- Gerontology
- Health Promotion
- Health Policy and Management

THE MPH CURRICULUM

MPH Core Courses (15 credit hours):

- HPRB 7010: Behavioral Sciences
- BIOS 7010: Biostatistics
- EHSC 7010: Environmental Health
- EPID 7010: Epidemiology
- HPAM 7010: Health Policy & Management
- Three or more courses in MPH concentration area (12-15 credit hours)
- Elective courses (5-12 credit hours)
- Internship (6 credit hours)
- Capstone Project (3 credit hours)

Total: 44 credit hours



Before engaging in my coursework, I thought of public health simply as community-based interventions and health promotion flyer campaigns. I think what surprised me the most was the number of different levels that public health interventions work at – from the individual to the community, policy to society.

VICTORIA FONZI, B.S. CELLULAR BIOLOGY/MPH '21

BEGIN THE JOURNEY

Students interested in the Double Dawgs program should first meet with their Undergraduate Advisor no later than the end of their second-year to determine if they qualify and discuss whether or not the program is right for them.

To qualify, students must be pursuing a major in an approved bachelor's to MPH pathway. Students who are in a major that does not have an approved pathway must discuss the potential for a partnership with their Undergraduate Advisor. Approved pathways can be found online at doubledawgs.uga.edu.

To apply to the pathway, students must fulfill requirements established by each individual pathway. These may include a minimum GPA, coursework, or acceptable progress towards the bachelor's degree.

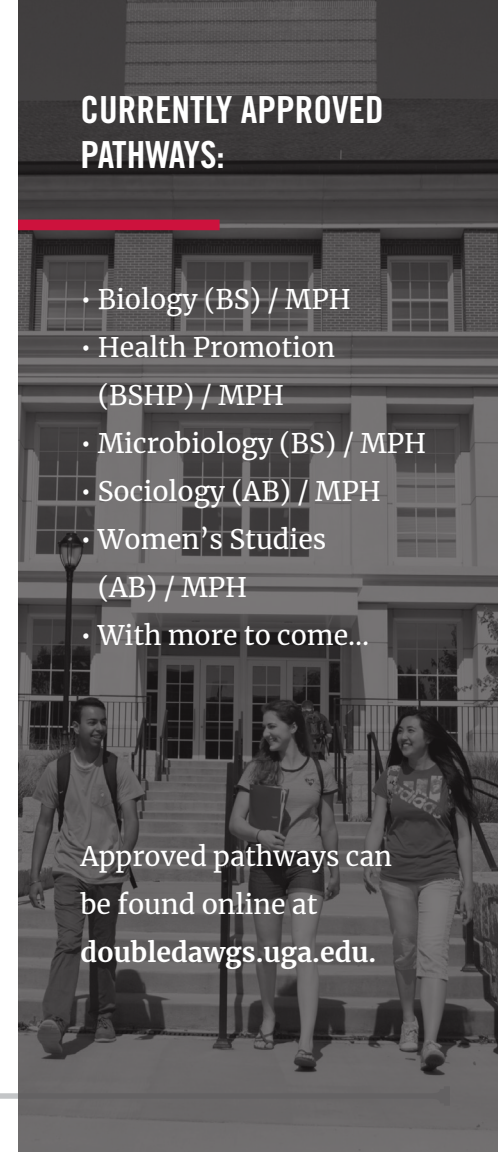
Qualifying students can then set up a meeting with the College of Public Health's MPH Program Director to identify their concentration, establish a timeline for applying to the dual degree pathway, complete necessary paperwork, and ensure their ability to enroll in graduate level coursework during the appropriate undergraduate semesters.

A student's application to begin the Double Dawgs (Bachelor's-MPH) pathway is not complete without authorization from both their Undergraduate Advisor and the MPH Program Director.

CURRENTLY APPROVED PATHWAYS:

- Biology (BS) / MPH
- Health Promotion (BSHP) / MPH
- Microbiology (BS) / MPH
- Sociology (AB) / MPH
- Women's Studies (AB) / MPH
- With more to come...

Approved pathways can be found online at doubledawgs.uga.edu.



THE BS-MPH DOUBLE DAWGS PATHWAY

Students enrolled in the Bachelor's-MPH Double Dawgs pathway will typically spend their first two to three years on their undergraduate curriculum. By the third-year of their undergraduate degree, students admitted into the Bachelor's-MPH pathway will begin to take graduate-level courses. Up to 12 credit hours of graduate-level courses will count towards both their undergraduate and graduate degree.

It's at this time that pathway students begin their formal application to the College's Master of Public Health (MPH) graduate program. Pathway students can contact the MPH program office mph@uga.edu for assistance with this process.



Applications to the MPH program must be submitted through the School of Public Health Application Service (SOPHAS) at www.sophas.org. Completion of the SOPHAS application requires:

- Reporting all previous collegiate coursework
- Three (3) letters of recommendation
- Personal statement and CV/Resume
- \$135 application fee
- \$25 supplemental application fee to the UGA Graduate School

Students should also take the GRE/MCAT/GMAT prior to the completion of their 12 credit hours of graduate coursework. These scores must be submitted to UGA or SOPHAS before the appropriate MPH program admissions deadline. Once accepted into the MPH program, students must attend the College's Graduate Orientation and meet with an advisor in their concentration.

Faculty and staff dedicated to the dual degree program will monitor students' progress towards completion of both degrees. Students will work with their Undergraduate Advisor to obtain approval for the pathway and establish

a clear undergraduate program of study that includes the 12 overlapping graduate course credits. MPH program faculty and staff will advise on transitioning to the MPH, required credit hours for the degree, and approvals needed by the student prior to the initiation of their first graduate course.



“



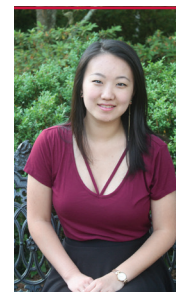
As a biology major, you cover a lot of basic science and technical subjects. But I also wanted to look at the 'people' side of health and a master's in public health allows me to do that. I can look at disease trends in populations and understand why people have the certain health behaviors that they have. It allows me to integrate the scientific with the sociological.

LINDSEY STANLEY, B.S. BIOLOGY/MPH '21

TIMELINE	TASKS	DETAILS
PRIOR TO COMPLETING 60 UNDERGRADUATE CREDIT HOURS	Discuss interest and qualifications with Undergraduate Advisor.	Begin these talks early and have them frequently.
	Meet with the MPH Program Director.	Email mph@uga.edu to schedule an appointment ONLY after approval from Undergraduate Advisor.
	Work towards completion of UGA's General Education Core Curriculum.	
	Complete a proposed plan of student for Bachelor's-MPH pathway.	
	Submit documents for approval to the Double Dawgs pathway.	Once approved, students may register for graduate courses.
ONCE ACCEPTED IN BACHELOR'S-MPH DOUBLE DAWGS PATHWAY	Begin taking graduate-level courses: Up to 12 hours of graduate credit may be counted toward the undergraduate degree.	Students obtain permission for the courses they wish to add each semester via email at mph@uga.edu .
	Take the GRE/MCAT/GMAT.	Contact UGA Testing Services (https://testing.uga.edu/).
	Establish a user profile in SOPHAS. Request official transcripts, recommendations, and test scores.	Log in at http://www.sophas.org/ .
PRIOR TO COMPLETING 12 GRADUATE CREDIT HOURS	Complete SOPHAS application. For details, visit our MPH admissions website portal or attend an info session during your application term.	CPH Apply Now Portal: https://publichealth.uga.edu/apply-now/ CPH Events Calendar: https://publichealth.uga.edu/events/

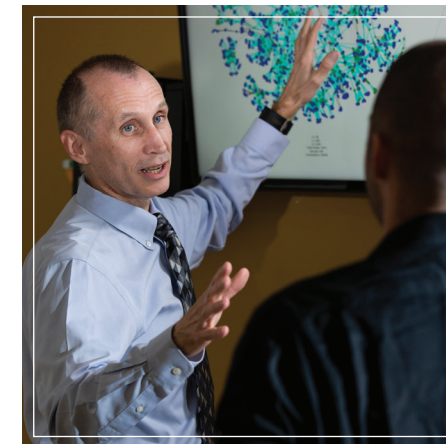


“



The Double Dawg BS/MPH pathway is a great program for those who have serious interests in separate but related disciplines. For me, I knew I wanted to become a physician, but I also wanted the skills to do population-based research, participate in program and policy design, and learn about health care systems and challenges through historic and global lenses.

JESSICA HO, B.S. CELLULAR BIOLOGY/MPH '19



TUITION AND FEES

During all terms of fulltime undergraduate enrollment, students remain eligible for federal aid. After acceptance into the UGA Graduate School, students must register using their graduate eligibility rather than their undergraduate eligibility and pay graduate tuition.

Students receiving Federal, State (Zell or HOPE), or institutional aid must work directly with the Office of Financial Aid (www.osfa.uga.edu) to ensure they have a firm understanding of their financial aid standing each semester of enrollment – this will ensure that a smooth transition in aid occurs at the point of graduate enrollment.



WHO TO CONTACT

At your UGA school or college:

Your Undergraduate Advisor:

Please contact a member of your school or college's undergraduate advising team to determine if the Double Dawgs program is right for you.

At the UGA College of Public Health:

Mumbi A. Anderson

MPH Program Director
105E Rhodes Hall – Health Sciences Campus
mumbi@uga.edu

Lindsey Welton

MPH Admissions Coordinator
105N Rhodes Hall – Health Sciences Campus
lindseyt@uga.edu

General Questions: mph@uga.edu

HELPFUL WEBSITES DURING APPLICATION:

- **To request personalized information**
<http://explore.publichealth.uga.edu/inquiryform>
- **MPH Concentrations**
<https://www.publichealth.uga.edu/academics/graduate>
- **SOPHAS**
<http://www.sophas.org/>
- **Submitting Scores to SOPHAS**
http://www.ets.org/gre/revised_general/scores/send#asr
- **UGA Graduate School**
<http://www.grad.uga.edu/>

ADDITIONAL RESOURCES (IMPORTANT WEBSITES):

College of Public Health
<http://www.publichealth.uga.edu/>

MPH FAQs
<http://www.publichealth.uga.edu/academics/faq>

MPH Student Handbook
http://www.publichealth.uga.edu/sites/default/files/documents/MPH_Handbook.pdf

MPH Degree Requirements
<http://www.publichealth.uga.edu/academics/requirements>

COMMITTED

TO THE PUBLIC'S HEALTH





**UNIVERSITY OF
GEORGIA**
College of Public Health

**Rhodes Hall – 105 Spear Road
Health Sciences Campus
University of Georgia
Athens, GA 30602**

publichealth.uga.edu
doubledawgs.uga.edu
mph@uga.edu
706.583.0885